



PROFESSIONAL

CLEANING GUIDE FOR HANDWASHING

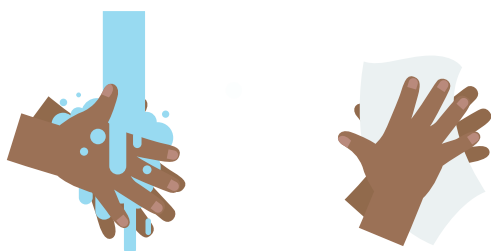


1 WET HANDS



Wet hands before applying soap.
Dispense one measure of hand soap.

3 RINSE & DRY



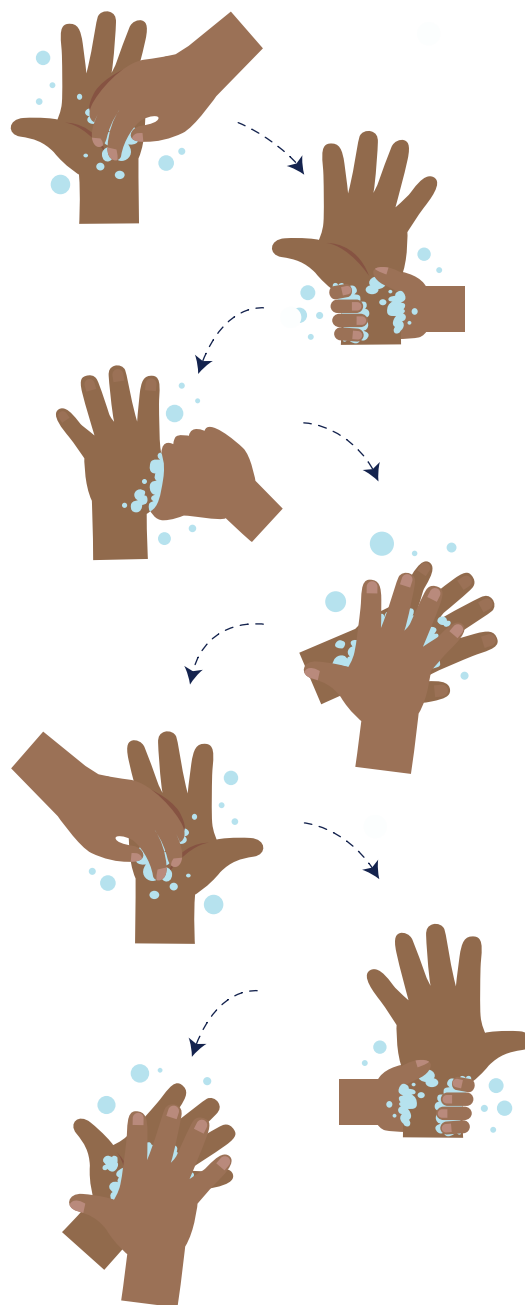
Rinse off and dry hands thoroughly. Be sure to use the **Lifebuoy Hand Sanitizer Liquid** when hands are dry as a final step.

INFECTION PREVENTION & CONTROL

Wash your hands before and after:

- Each job task
- Visiting the toilet
- Returning to the kitchen
- Handling waste or dirty food
- Coughing or sneezing
- Eating
- Smoking
- Touching your face, hair or other body parts

2 RUB & LATHER



Rub hands, forearms, wrists for 20 seconds.

CLEANING PRO TIPS

Always dry your hands after washing them.
Wet hands are more likely to spread bacteria than dry ones.